



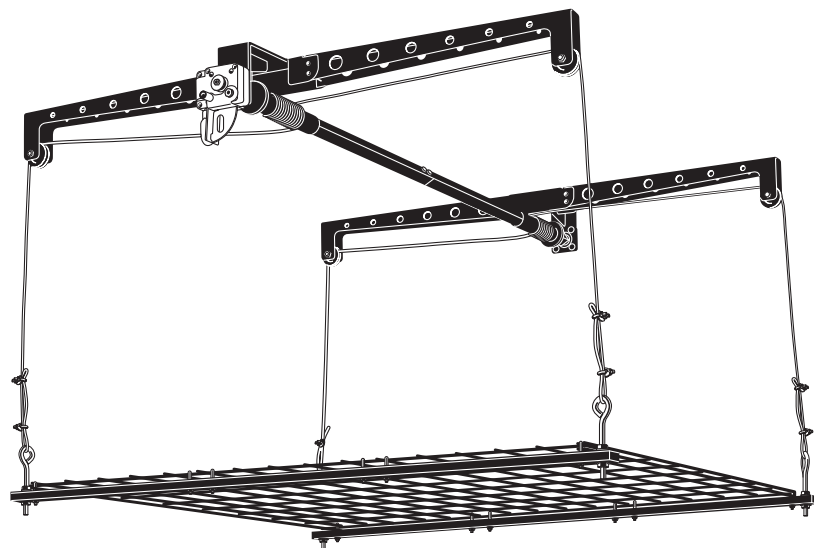
HOME STORAGE PRODUCTS

WARNING

Please read installation instructions carefully prior to installing. Before using the product, thoroughly test the fully-weighted product (up to 250lbs of evenly distributed weight on the platform) to ensure the product has been installed properly. Fasteners used to assemble and install the product should be checked and tightened at least once a year. Do not install more than one Ceiling Storage Lift on a common ceiling joist. If you are in doubt of installing this product, please contact a professional to perform the installation. Do not allow children to play on product. ITW Brands is not responsible for any damage resulting from improper installation, overloading or product failure.

Note: When choosing a location for your Ceiling Storage Lift, make sure there is enough room to raise and lower the platform. All obstructions and people should be moved out of the way when raising or lowering.

Limited Warranty: These products are sold "as is" without any express or implied warranties. ITW Brands sole liability, if any, shall be to replace this product or refund the purchase price. The performance of these products is subject to variable conditions and maximum load ratings are shown for comparison purposes only. ITW Brands will not be liable for personal injury or damage to possessions as a result of improper installation, overloading the platform, unintended use, product modification, poor quality of the mounting surfaces, or other abuses of the product outside of lifting the static weight of 250lbs.



OPERATION

The Racor Ceiling Storage Lift can be raised or lowered using the supplied winding pole. Attach to the winding pole either the supplied hand-crank or the supplied drill/driver adapter. When using either the hand-crank or the drill adapter, be sure these attachments are secured to the winding pole. When using the drill adapter, use only a drill with a ½ inch chuck. Tighten the chuck jaws firmly on the flats of the drill driver prior to operation by following the instruction manual from the drill manufacturer. Raise and lower the lift using only the low speed setting of the drill.

Only operate the product with the winding pole and either the hand-crank or the drill/driver adapter. Do not use other adaptors or sockets.

PHL-1R

Ceiling Storage Lift

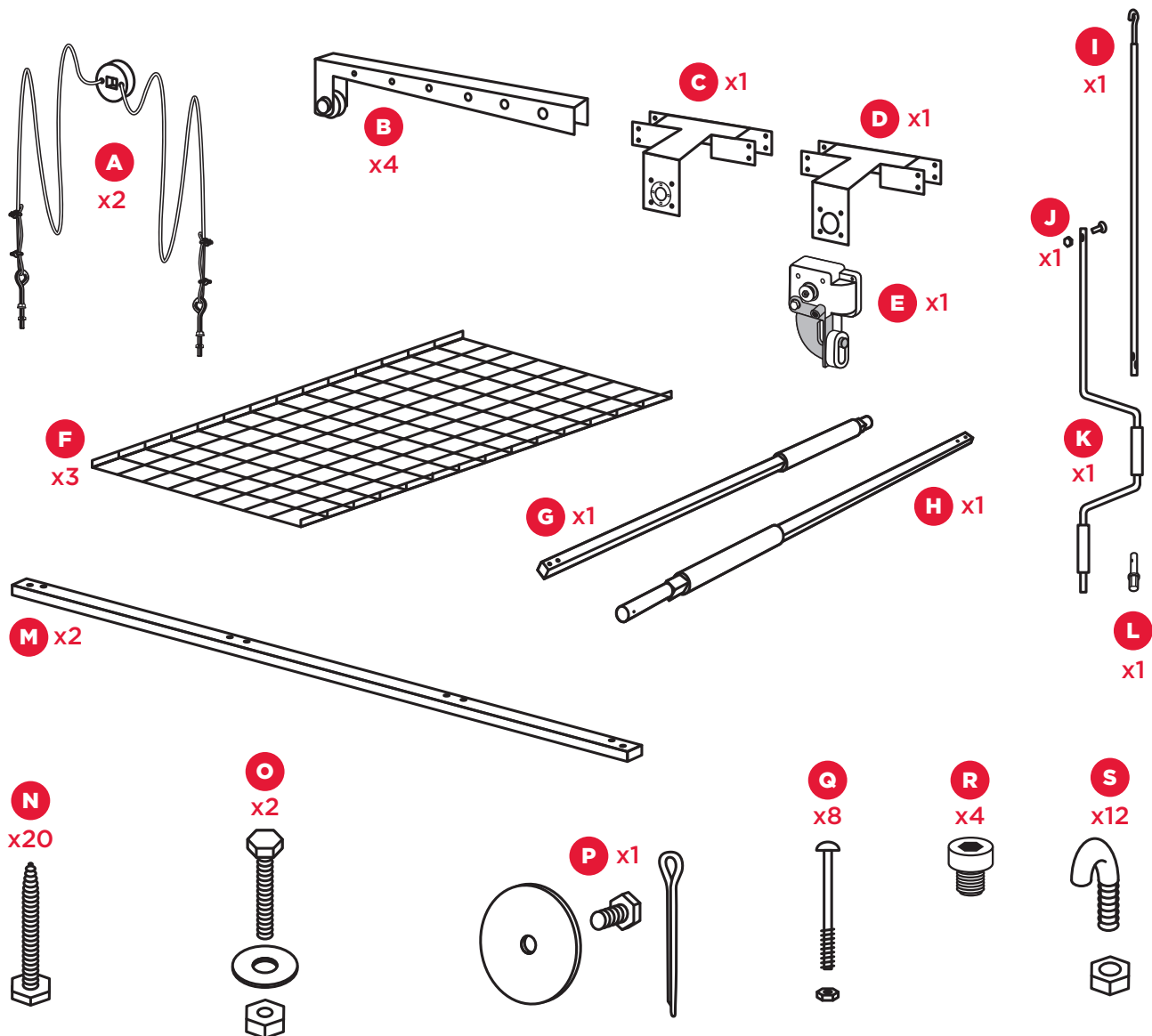
Assembly and installation instructions

www.racorstoragesolutions.com

Tools required: stud finder, wrench, cordless drill/driver, phillips screwdriver, 10 mm socket wrench, pencil, 4 ft. straightedge, and pliers.

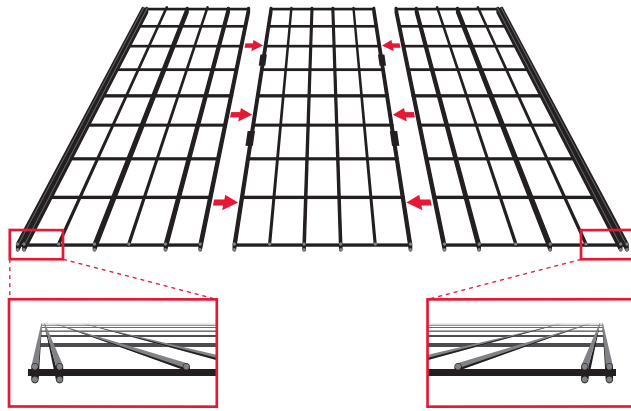
Parts list:

- | | | | |
|--|--|--|--|
| A cable assembly | F wire platform - 2 side,
wire platform - 1 middle | K hand-crank | P cotter pin,
fender washer, and
hex screw - gear drive
side |
| B arm assembly | G axle - square end | L drill driver | Q long machine screw
and nut |
| C axle support with
bushing | H axle - round end | M platform support | R allen head cap screw |
| D axle support
without bushing | I winding pole | N hex head lag screw | S J-bolt and nut |
| E gear drive | J short machine screw -
winding pole nut | O hex screw,
washer, and nut | |

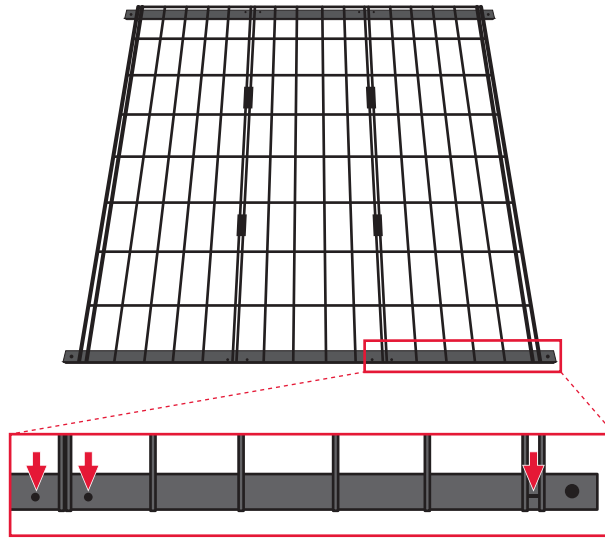


Assemble platform

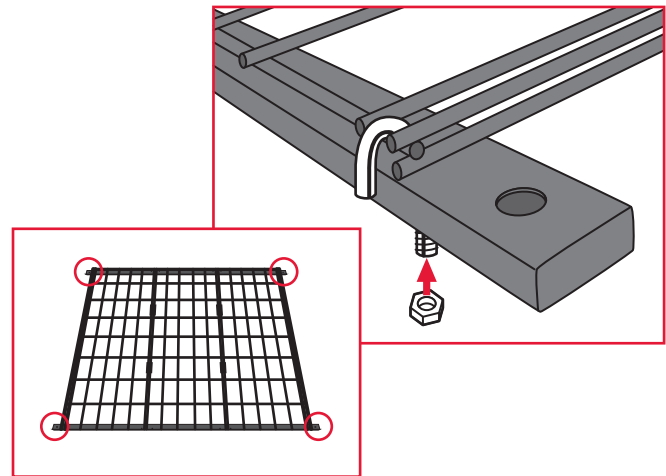
- 1** Lay the three wire platforms **F** on the floor. Place the wire platform with the four tabs in the middle. These tabs will fit into the two outer platforms.



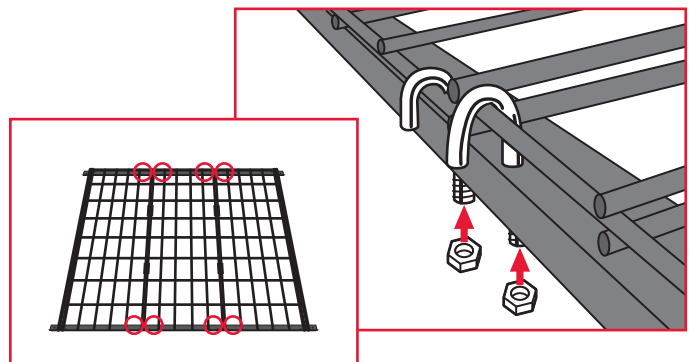
- 2** Lay the platform supports **M** underneath and across all three wire platforms. The holes on the platform supports should face towards the outside edge of the wire platforms.



- 3** Locate the holes on platform supports for J-bolts **S** and slide four J-bolts thru the wire platforms and holes on the four corners of platform supports. Place J-bolt between double wire. The J-bolt should hook over wire platform and over the outside edge of the platform support. Using a nut, hand-tighten only.



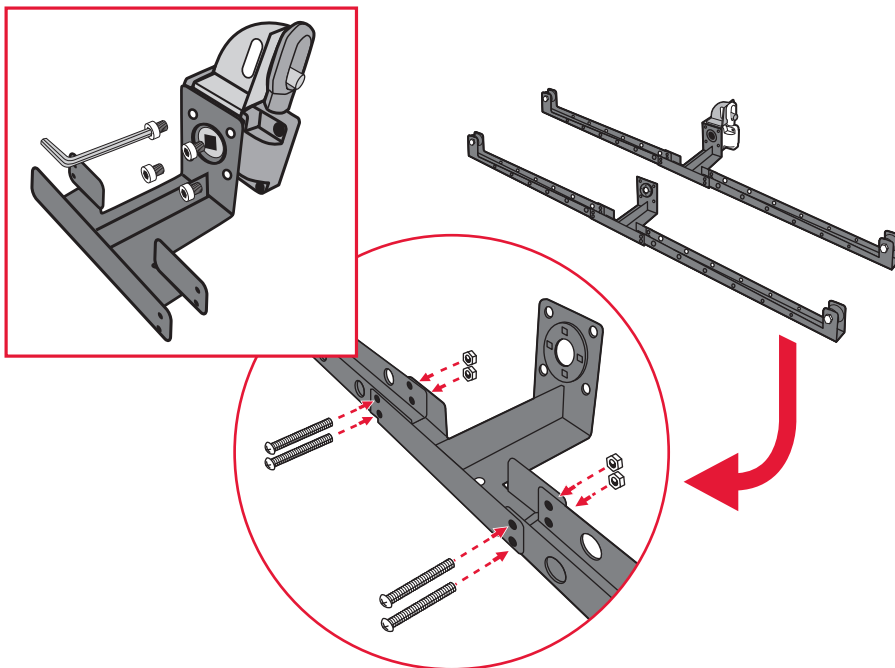
- 4** Place the remaining J-bolts **S** over the edge of the wire platforms and over the outside edge of the platform supports. Using a nut, hand-tighten only.



Assemble and install the two arm supports

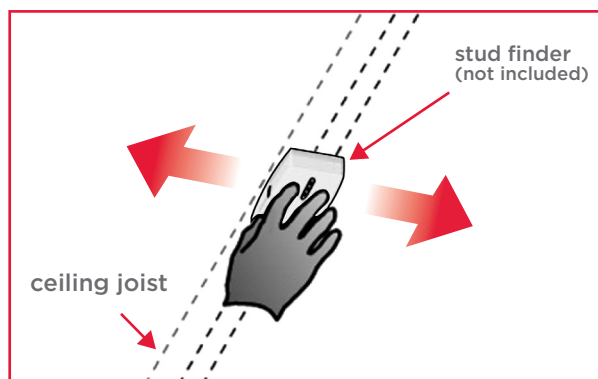
5 Fasten the gear drive **E** to the axle support without the bushing **D**, using 4 allen head cap screws **R**, and the allen wrench provided.

Then fasten two arms **B** to each Axle support **C D**, using long machine screws. Each arm should be secured with 2 machine screws and 2 nuts **Q**.

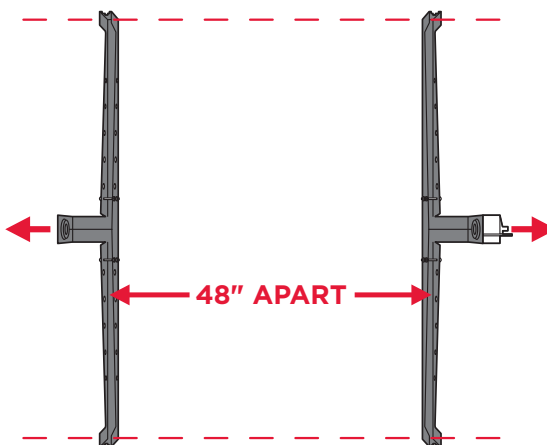


6 Locate ceiling joists for each Arm support. Arm supports need to be secured directly to and along ceiling joists 48" apart.

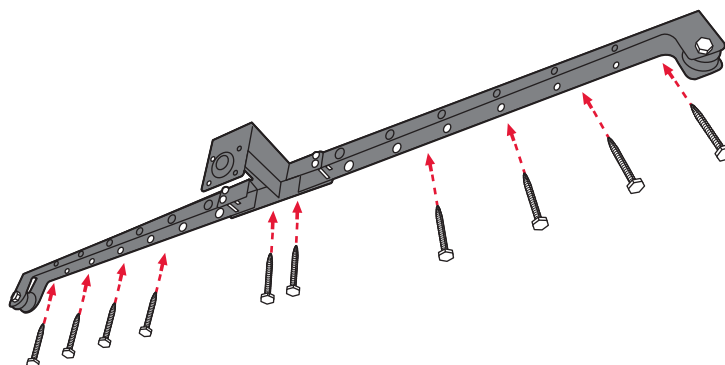
If installing not along the ceiling joist, install a 2x4 board that will span 4 of the joists using lag screws at least 3/8" x 5" long. Pre-drill holes.



7 The Axle supports **C D** should be facing away from each other and the two Arm supports should line up and be square to each other.

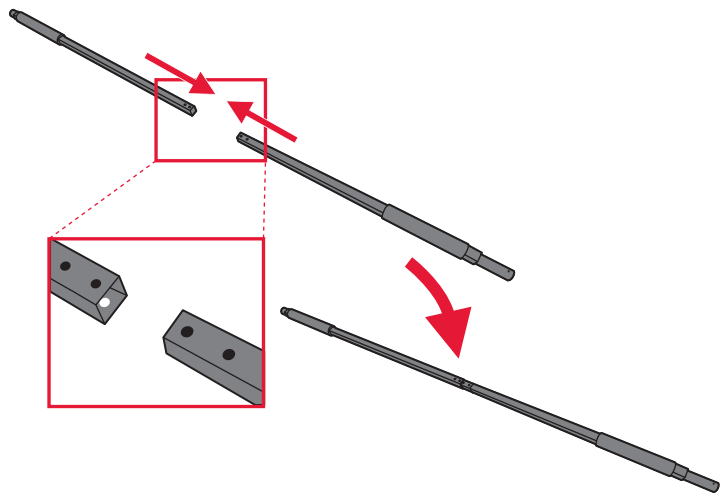


8 Attach Arm supports to the ceiling joist, using the supplied lag screws **N**. Pre-drill with 1/8 inch pilot holes into the ceiling joists. Do not over tighten lag screws.

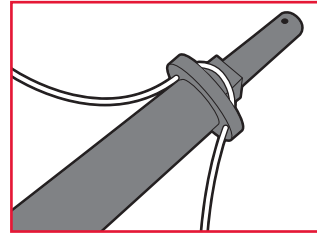


Assemble and install axles and cable assemblies

- 9** Slide together the Axles **G H** but do not assemble with screws yet. The bolt holes should be in line.

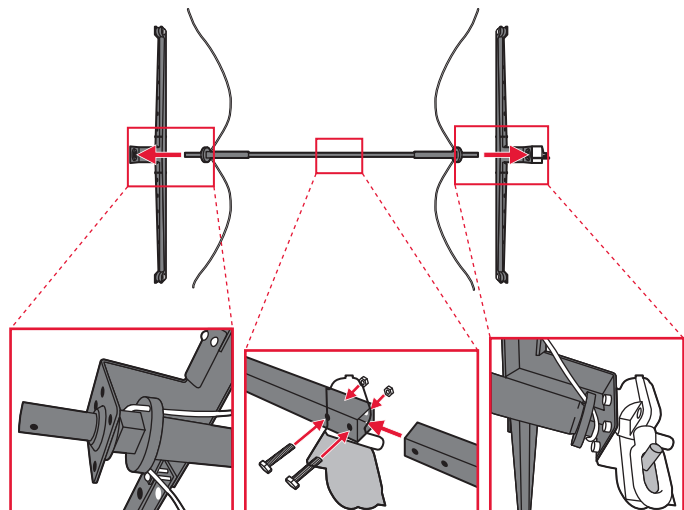


- 10** Slide each cable assembly ring **A** over the square shoulder at each end of Axle **G H**, as far as it will go. The cable assemblies should be placed on the square portions of the Axle and the cable ends should face towards the center.

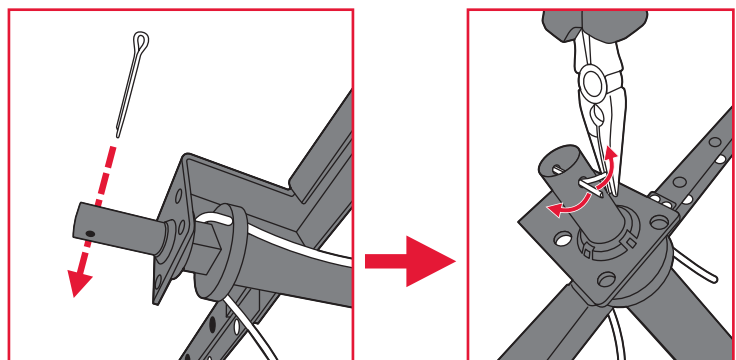
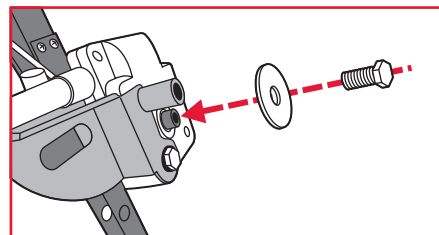


- 11** Insert one end of the Axle into the Axle Support and slide them apart to insert the other end. The square end should fit into the gear drive and the round end should fit into the plastic bushing.

Fasten the Axle ends together with two screws and nuts **O**.

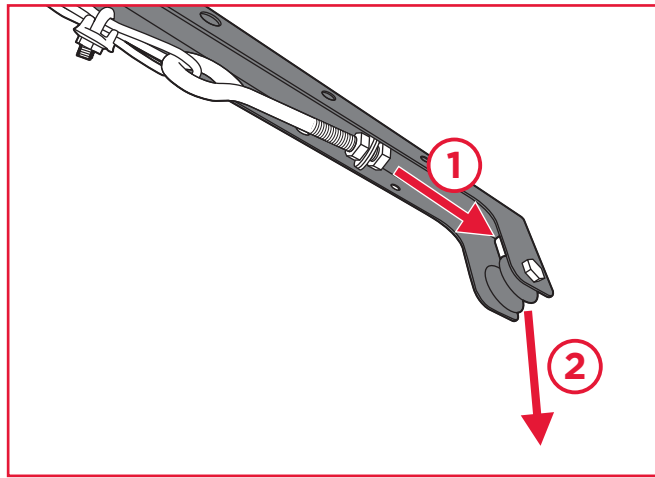


- 12** Secure the Axle by installing fender washer and hex screw **P** on the end of the gear drive. Then, insert the provided cotter pin through a hole on the other end and secure it by bending the two protruding ends.

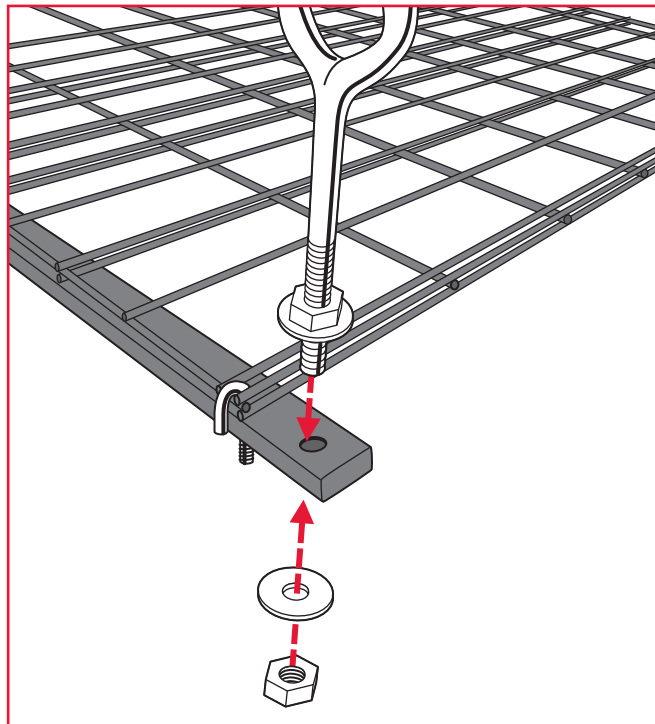


Attach cable assembly to platform

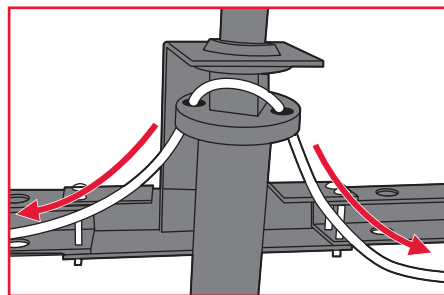
- 13** Route the ends of Cable assemblies **A** through the arms **B** and over the pulleys.



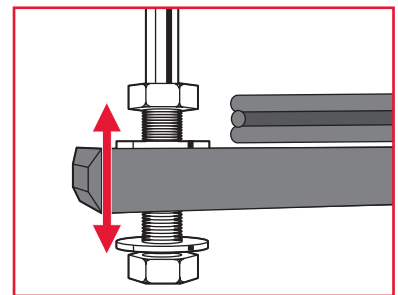
- 14** Thread one nut half-way up the eye-bolt at the end of the Cable assemblies **A**. Insert eye-bolt through the hole at the end of Shelf support **M** and fasten washer and nut from underneath. Repeat on all four corners.



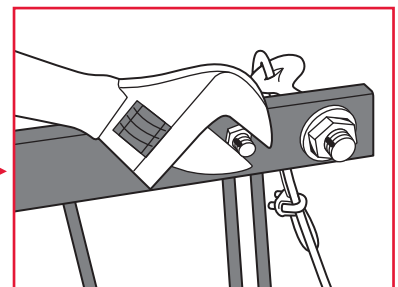
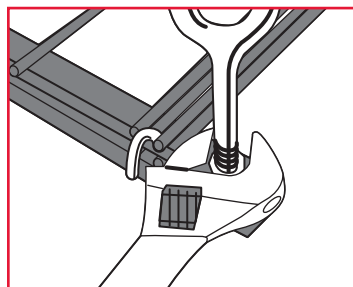
- 15** If platform is not level, adjust by pulling the cable through the nylon cable ring. For small adjustments, move both nuts up or down. When leveled, tighten the nuts on the Cable assembly **A** and tighten J-bolts **S** on the platform with a wrench.



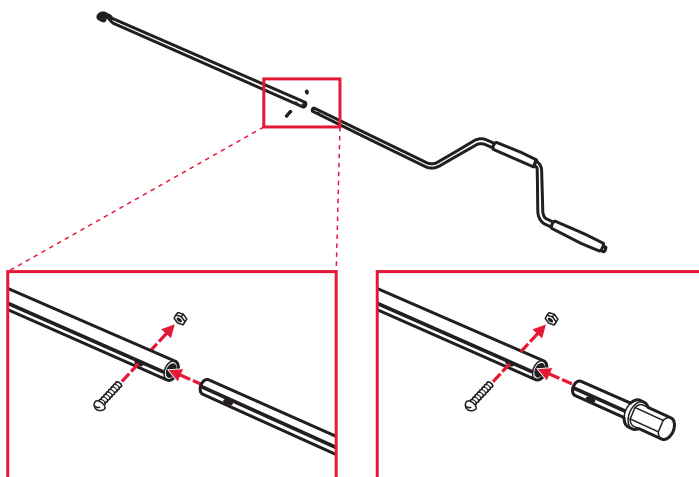
(Large adjustment)



(Small adjustment)



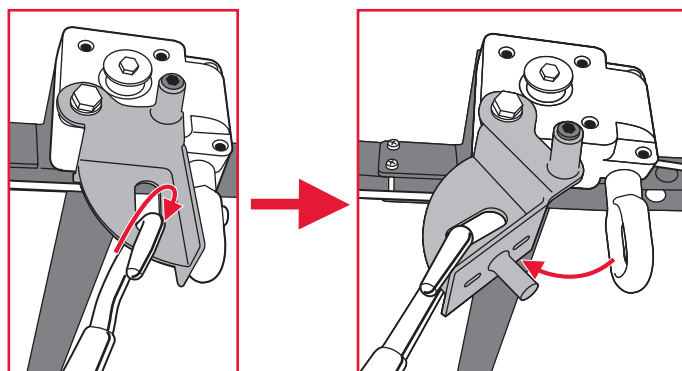
- 16** Assemble Winding pole **I** to Hand-crank **K** for manual operation or Drill/Driver **L** for powered operation, using the provided screw and nut **J**.



Optional Drill/Driver Adaptor

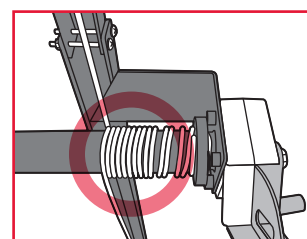
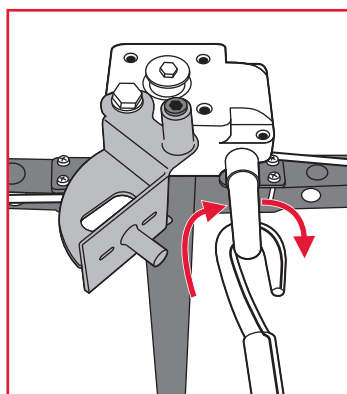
Operation

- 17** The gear drive that is attached to one end of the Axle supports has a safety lock. The safety lock is designed that it can be swung out to operate or swung-in when not in operation. Disengage the safety lock out by inserting Winding pole hook into the lock slot and pulling away from gear loop.

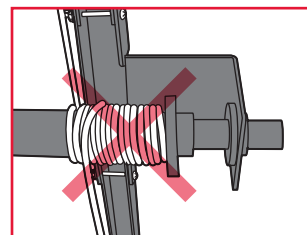


- 18** Place the Winding pole through loop on the gear drive. When operating, the platform must have weight on it. Place at least 25lbs of weight on the platform and slowly lift the platform. The cables should evenly wind around the Axle and not overlap. The platform should be raised such that the stored items are not touching the ceiling or the Axle. The platform will lower approximately 8 feet from the ceiling.

Note: If cables do not wind evenly, be sure cable ring is pushed all the way in. Also make sure the load is balanced and the platform is level.



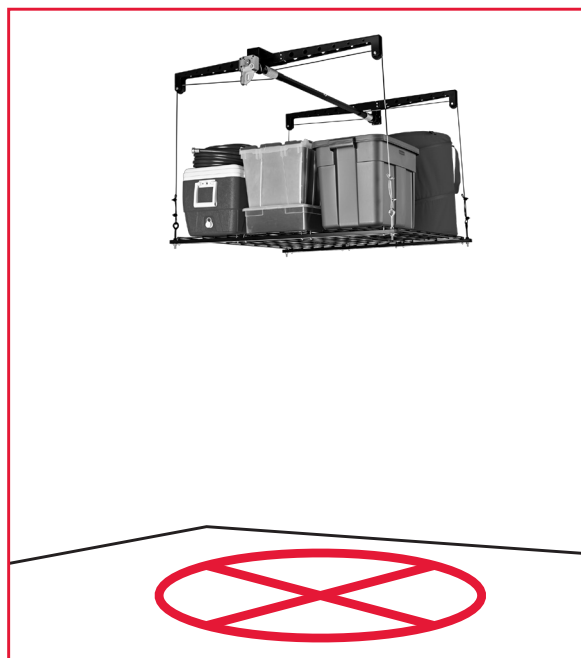
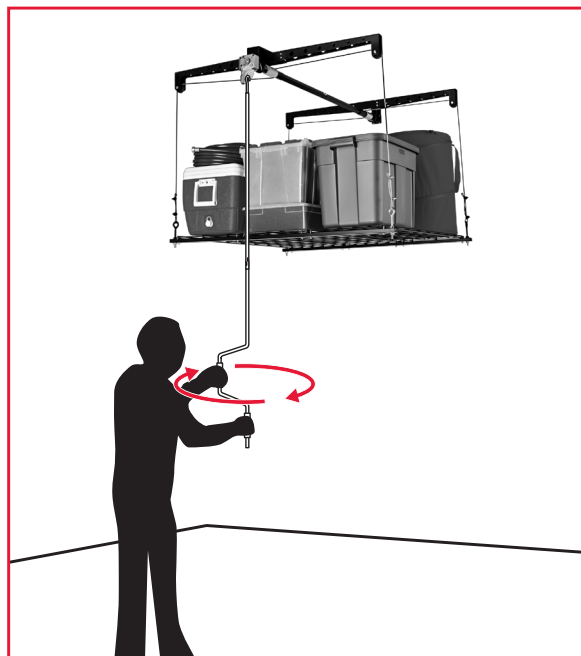
GOOD



BAD

! WARNING! Before raising or lowering the platform, clear all people and obstructions from under the platform in a 6ft x 6ft area. When loading the platform, the weight should be evenly distributed. Test by raising platform to ceiling. Always engage safety lock when platform is raised. Do not stand under platform while raising or lowering. The platform should remain flat and not tilt more than 10 degrees during operation. Failure to operate the product properly could cause objects to fall off the platform and result in serious injury or product damage.

! WARNING! Do not park car or walk under for at least 1 hour, to be sure that unit is installed securely. Never play on or around the product.



Limited Warranty: These products are sold "as is" without any express or implied warranties. ITW Brands' sole liability, if any, shall be to replace this product or refund the purchase price. The performance of these products is subject to variable conditions and maximum load ratings are shown for comparison purposes only.

PHL-1R

Made in China

ITW Brands, A division of Illinois Tool Works Inc.
955 National Parkway, Suite 95500
Schaumburg, IL 60173
800-783-7725
www.RacorStorageSolutions.com
Email: racorc@itwbrands.com

© 2013 Illinois Tool Works Inc.
Racor and Racor logo are registered trademarks of Illinois Tool Works Inc.

racor[®]
HOME STORAGE PRODUCTS

Thank you for purchasing this product. Racor storage and organizational solutions will inspire and put you back in control of your space. Racor has the largest variety of solutions to organize and store bikes, sports equipment, lawn and garden supplies, bulky items like ladders and totes, and clutter items like tools. Please visit www.RacorStorageSolutions.com for other great organizational products.